
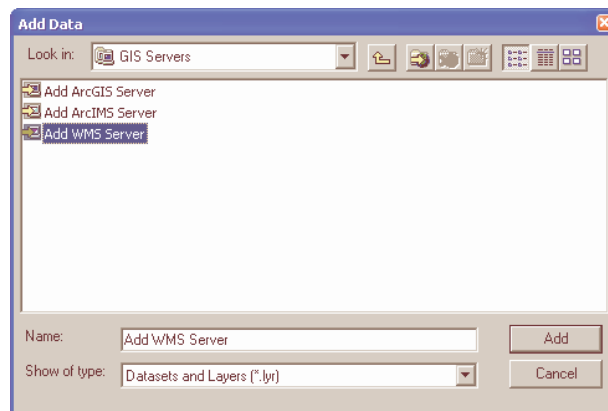


How do I use a WMS in ArcGIS?

1. Open an ArcMap project and click the “Add Data” button .
2. Double click on “GIS Servers.”

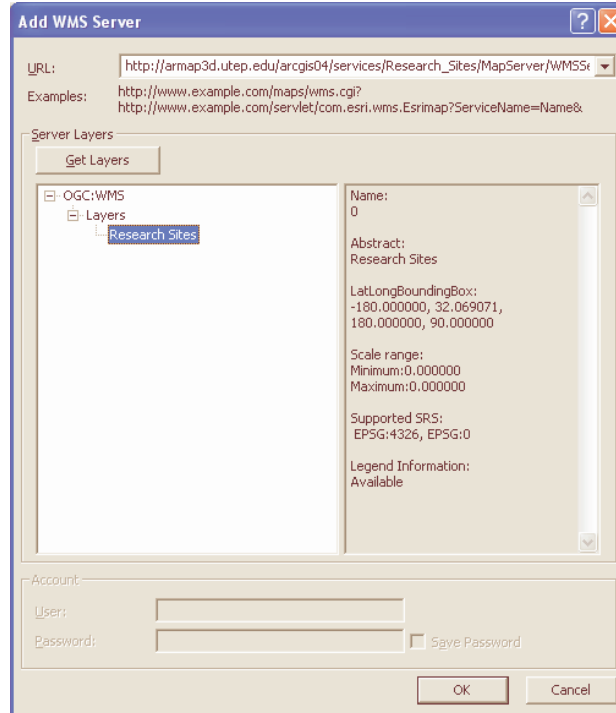


3. Double click on “Add WMS Server”.

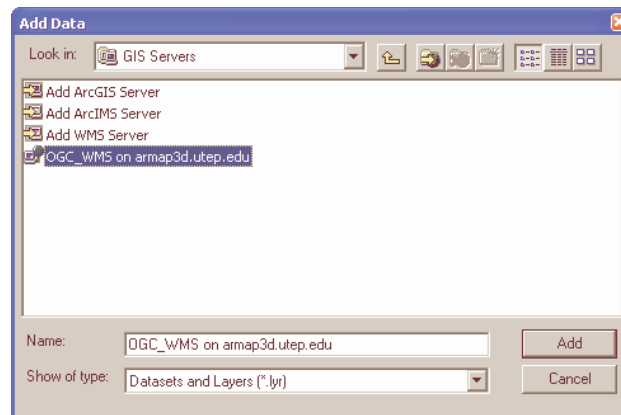


4. Copy and Paste the address below into the URL box:
http://armap3d.utep.edu/arcgis04/services/Research_Sites/MapServer/WMSServer

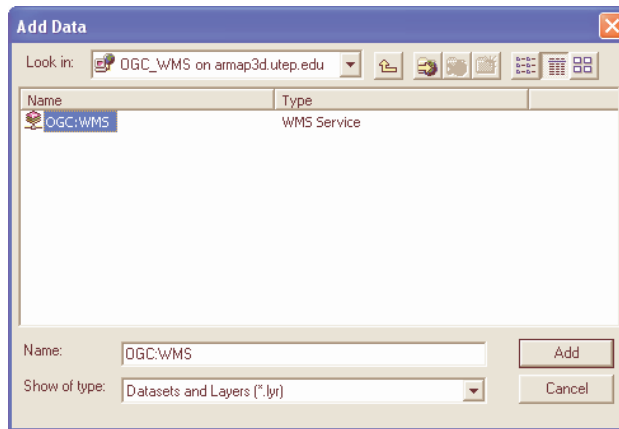
5. Click on “Get Layers” and select “Research Sites” and press “OK”



6. Select “OGC_WMS” on armap3d.utep.edu” as shown below and the choose “Add”



7. Select “OGC:WMS” and Choose “Add” again as show below.



8. The resulting WMS for the research sites layer will appear in the Geographic Coordinate System, WGS 1984.

